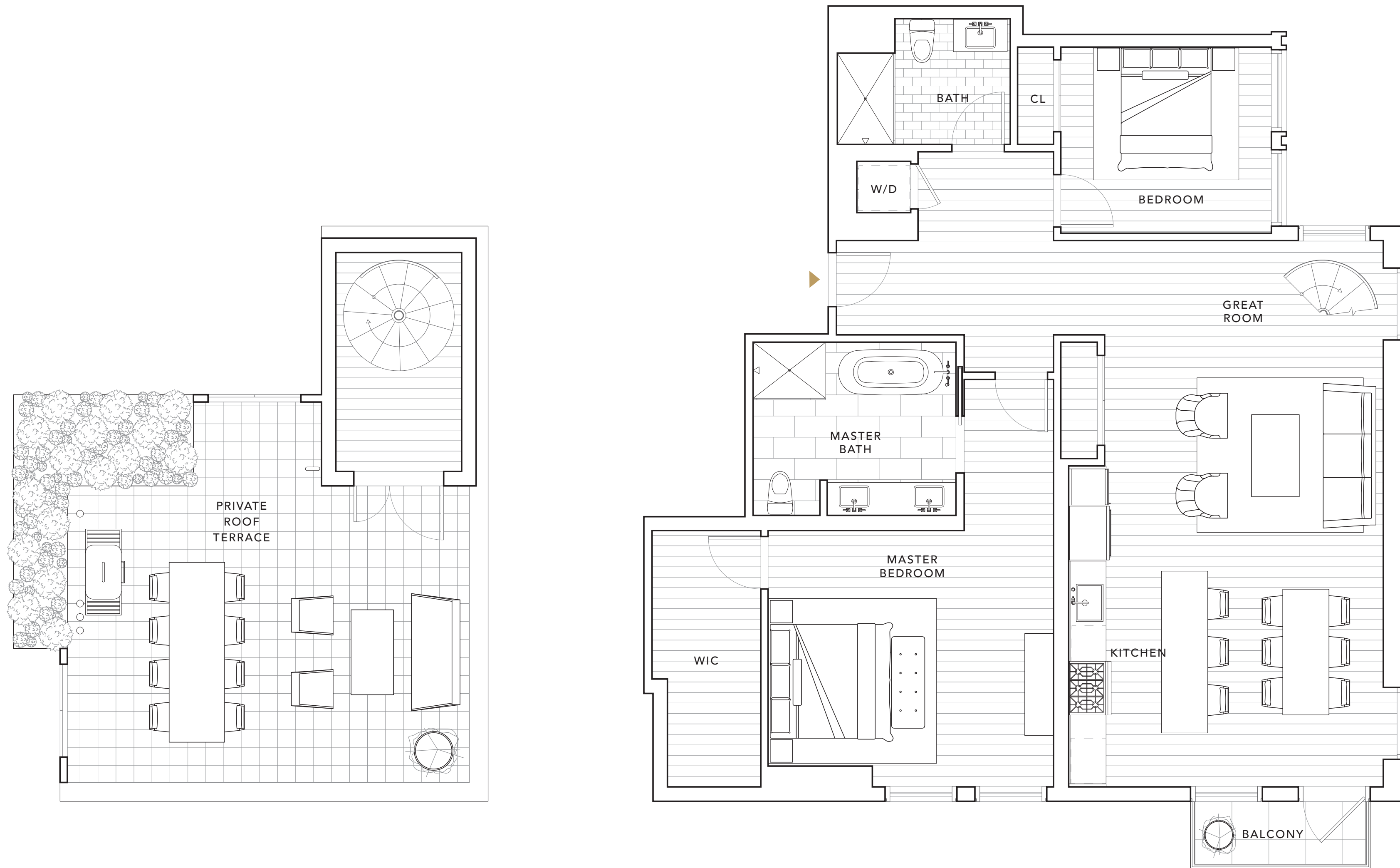


# PENTHOUSE C

2 BEDROOMS  
2 BATHROOMS

INTERIOR  
1,453 SQ. FT.  
EXTERIOR  
438 SQ. FT.



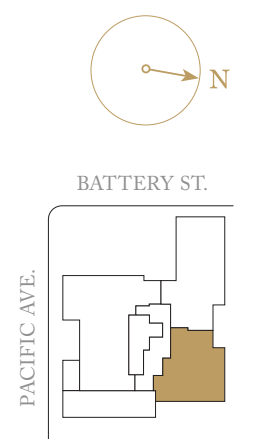
SHAPED *by*  
HISTORY.  
ELEVATED *by*  
DESIGN.



This is not an offer to sell, but is intended for information only. The developer reserves the right to make modifications in materials, pricing, specifications, plans, designs, scheduling and delivery of the homes without prior notice. Exclusively represented by The Mark Company and Pacific Union International. CaBRE licenses #01527205 and #01866771. Brand by Williams New York. Washer/dryer and gas grill hookups provided.

GROSVENOR

THE MARK COMPANY



0' 1' 2' 4' 8'