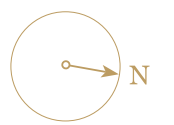
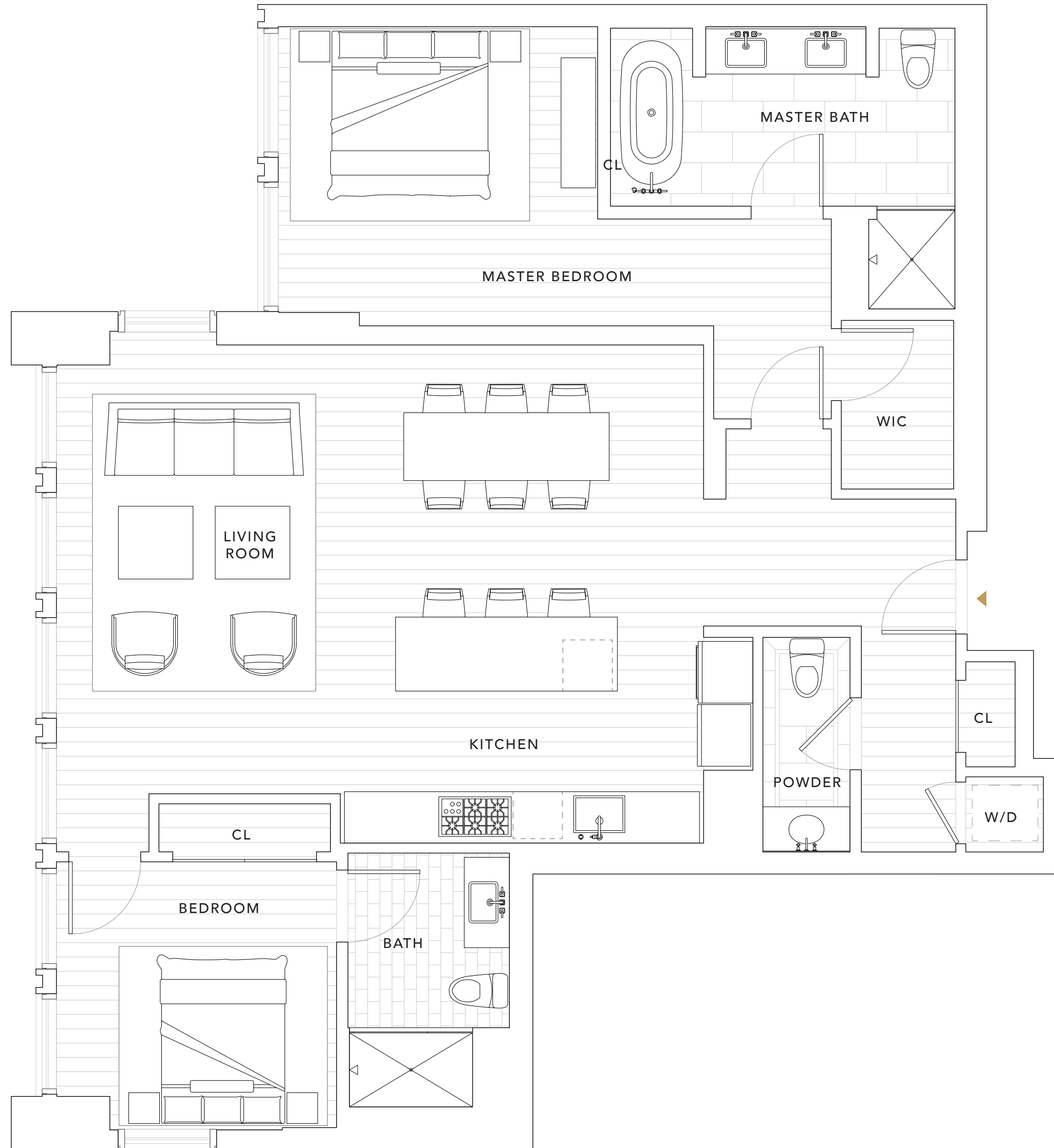


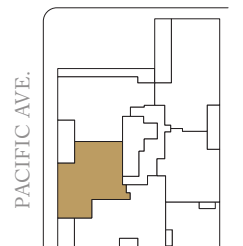
RESIDENCES 4E-5E

2 BEDROOMS
2 BATHROOMS
POWDER ROOM

INTERIOR
1,332-1,336 SQ FT



BATTERY ST.



PACIFIC AVE.

SHAPED *by*
HISTORY.
ELEVATED *by*
DESIGN.

 This is not an offer to sell, but is intended for information only. The developer reserves the right to make modifications in materials, pricing, specifications, plans, designs, scheduling and delivery of the homes without prior notice. Exclusively represented by The Mark Company and Pacific Union International. CalBRE licenses #01527205 and #01866771. Brand by Williams New York. Washer/dryer hookup provided.

 GROSVENOR

 THE MARK COMPANY
PACIFIC UNION INTERNATIONAL

