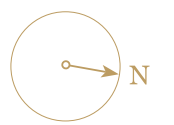
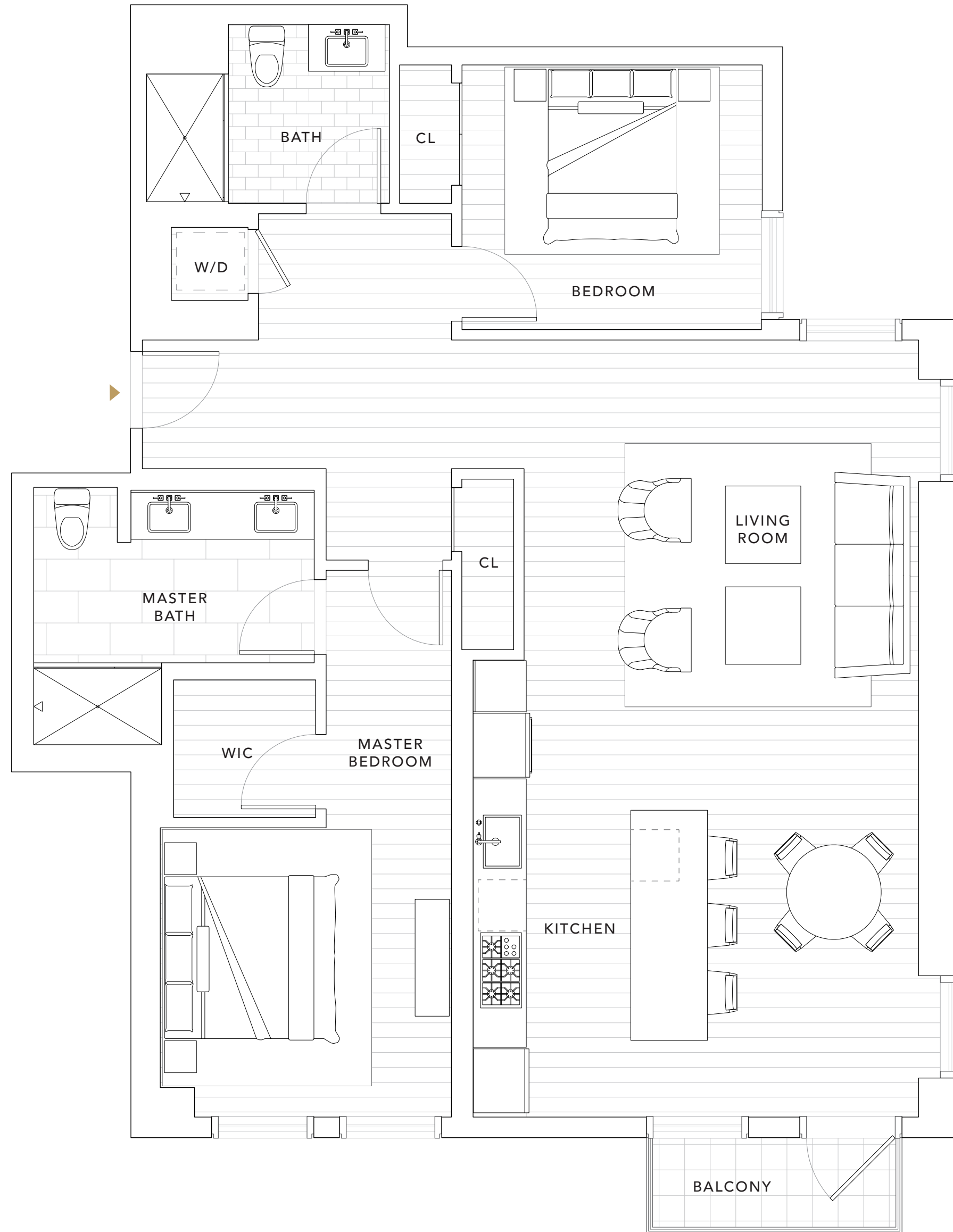


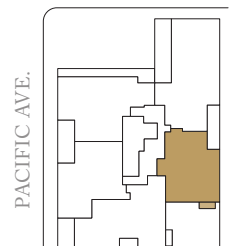
RESIDENCE 4C

2 BEDROOMS
2 BATHROOMS

INTERIOR
1,218 SQ FT
EXTERIOR
35 SQ FT



BATTERY ST.



SHAPED *by*
HISTORY.
ELEVATED *by*
DESIGN.



This is not an offer to sell, but is intended for information only. The developer reserves the right to make modifications in materials, pricing, specifications, plans, designs, scheduling and delivery of the homes without prior notice. Exclusively represented by The Mark Company and Pacific Union International. CalBRE licenses #01527205 and #01866771. Brand by Williams New York. Washer/dryer hookup provided.

GROSVENOR

MARK
COMPANY
PACIFIC UNION INTERNATIONAL

0' 1' 2' 4' 8'