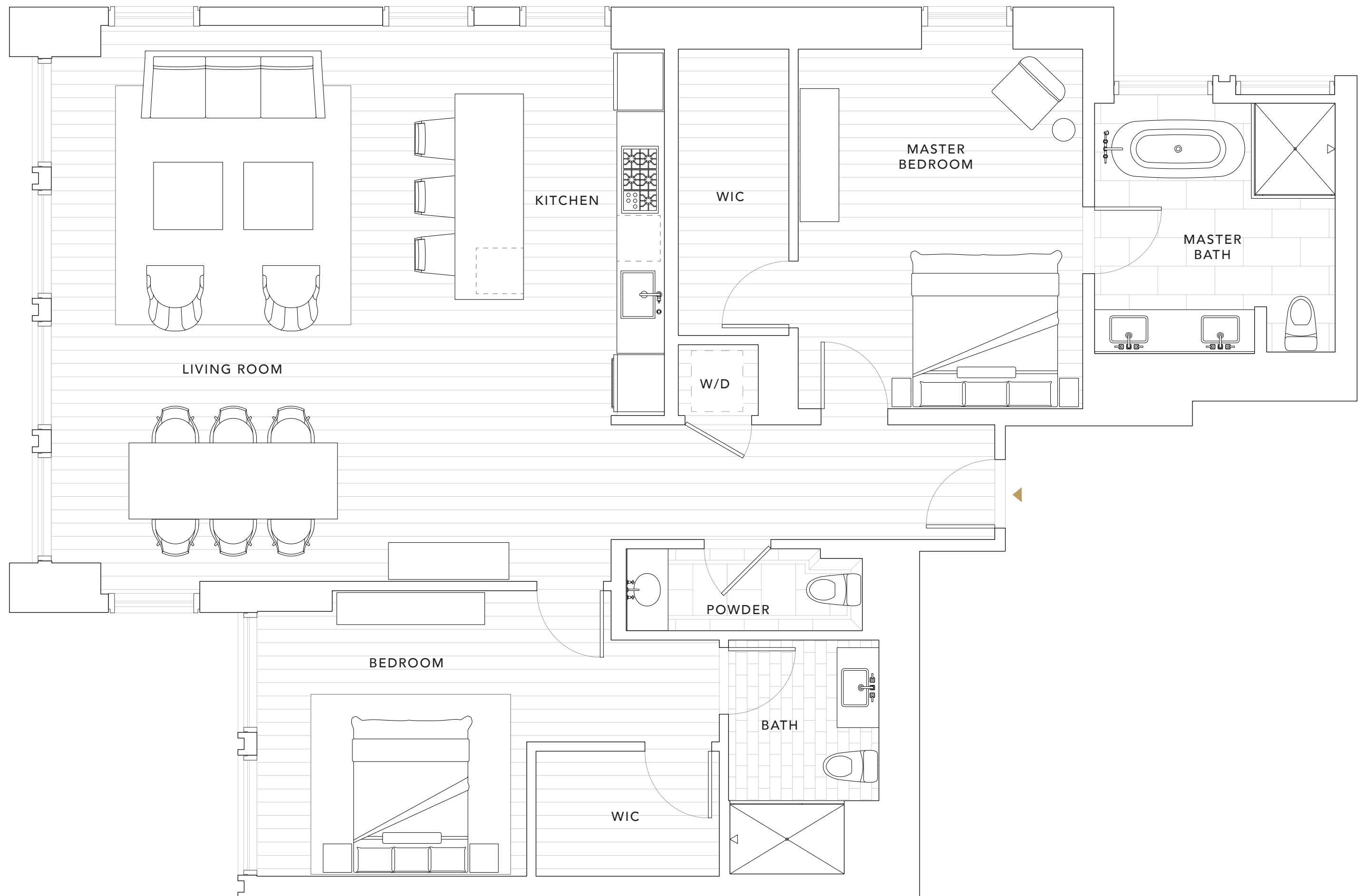


# RESIDENCES 4A-6A

2 BEDROOMS  
2 BATHROOMS  
POWDER ROOM

INTERIOR  
1,522 SQ FT



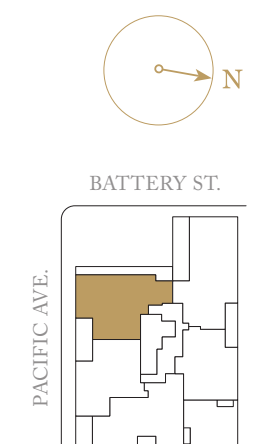
SHAPED *by*  
HISTORY.  
ELEVATED *by*  
DESIGN.



This is not an offer to sell, but is intended for information only. The developer reserves the right to make modifications in materials, pricing, specifications, plans, designs, scheduling and delivery of the homes without prior notice. Exclusively represented by The Mark Company and Pacific Union International. CalBRE licenses #01527205 and #01866771. Brand by Williams New York. Washer/dryer hookup provided.

GROSVENOR

MARK  
COMPANY  
PACIFIC UNION INTERNATIONAL



0' 1' 2' 4' 8'