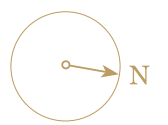
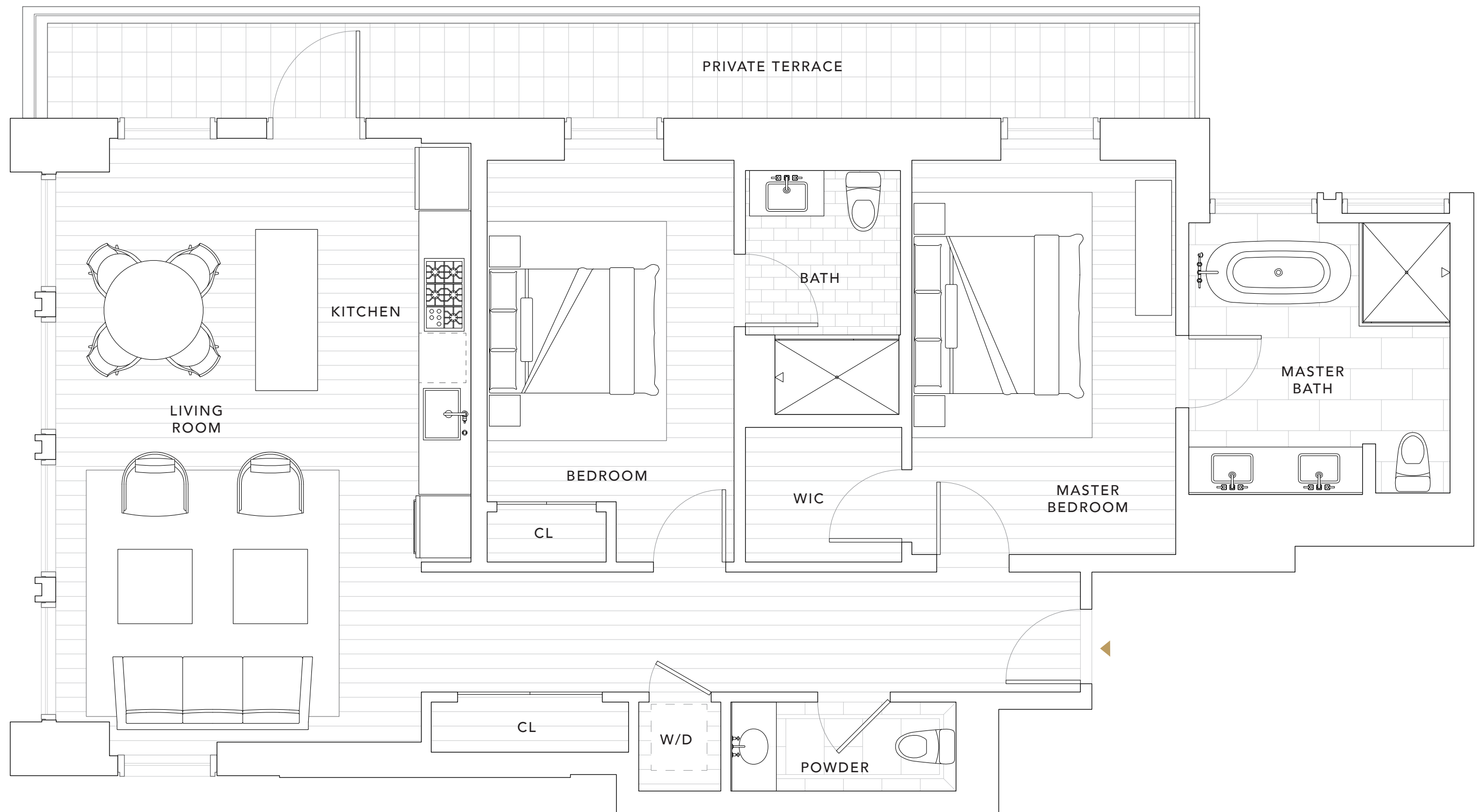


RESIDENCES 2A-3A*

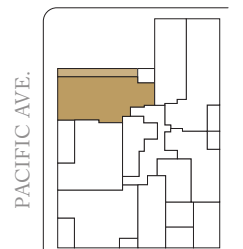
2 BEDROOMS
2 BATHROOMS
POWDER ROOM

INTERIOR
1,207 SQ FT
EXTERIOR*
245 SQ FT

*2A TERRACE AS SHOWN
3A NO TERRACE



BATTERY ST.



SHAPED *by*
HISTORY.
ELEVATED *by*
DESIGN.



This is not an offer to sell, but is intended for information only. The developer reserves the right to make modifications in materials, pricing, specifications, plans, designs, scheduling and delivery of the homes without prior notice. Exclusively represented by The Mark Company and Pacific Union International. CalBRE licenses #01527205 and #01866771. Brand by Williams New York. Washer/dryer hookup provided.

GROSVENOR

THE MARK COMPANY
PACIFIC UNION INTERNATIONAL

0' 1' 2' 4' 8'